



FEBRAS

Logistics of the Siberian Shelf Study : (2003-2011).

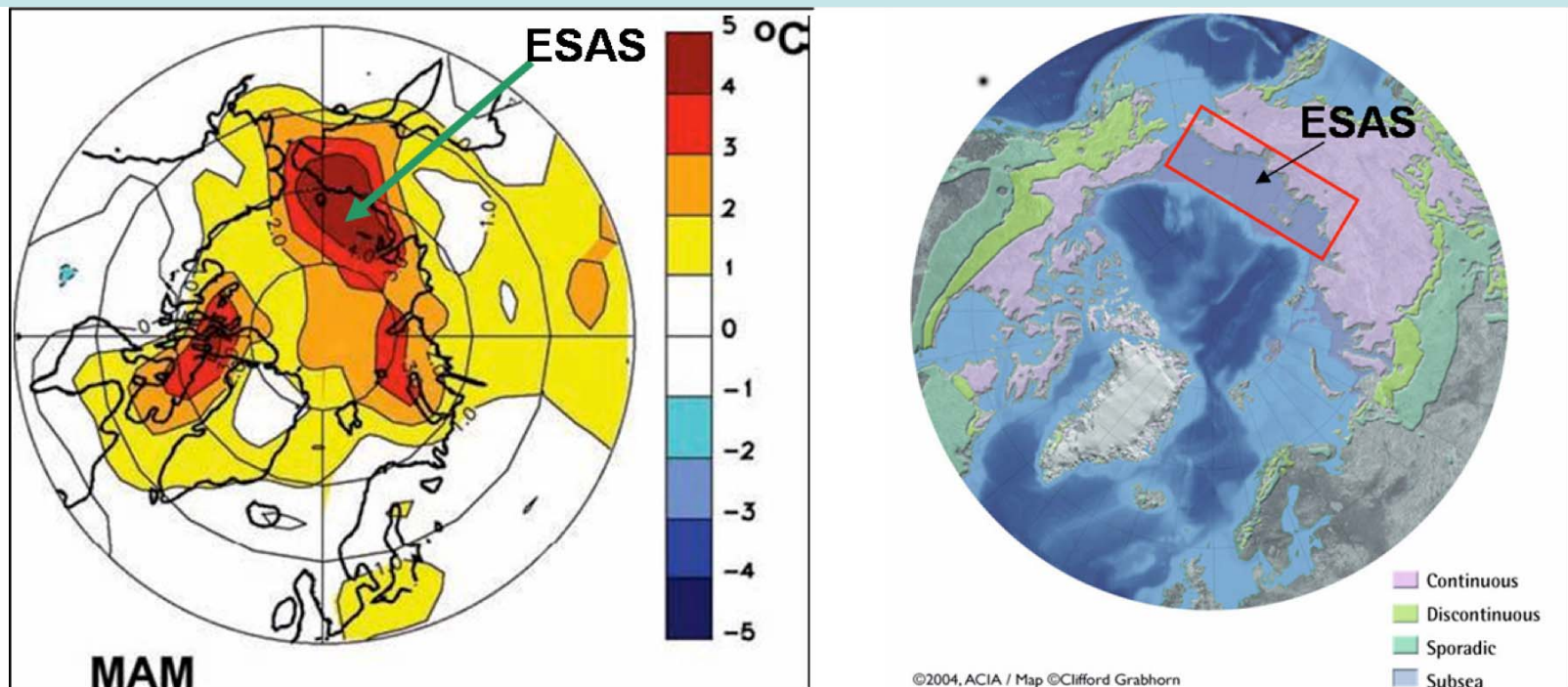
Igor Semiletov

International Arctic Research Center/University Alaska
Fairbanks (IARC) & Pacific Oceanological Institute,
Far Eastern Branch of Russian Academy of Sciences
(FEBRAS)

**GEOTRACE Arctic Cruise Planning Meeting
June 8-10, 2009
HWK, Delmenhorst, Germany**

Goals

- To elucidate the role of the East Siberian Arctic Shelf (ESAS) in the regional carbon cycle.
- To identify the main processes driving the carbon cycle on the ESAS with emphasize on export of terrestrial carbon (rivers vs coastal erosion);
- To evaluate the response of Arctic marine ecosystems to ongoing climate change.

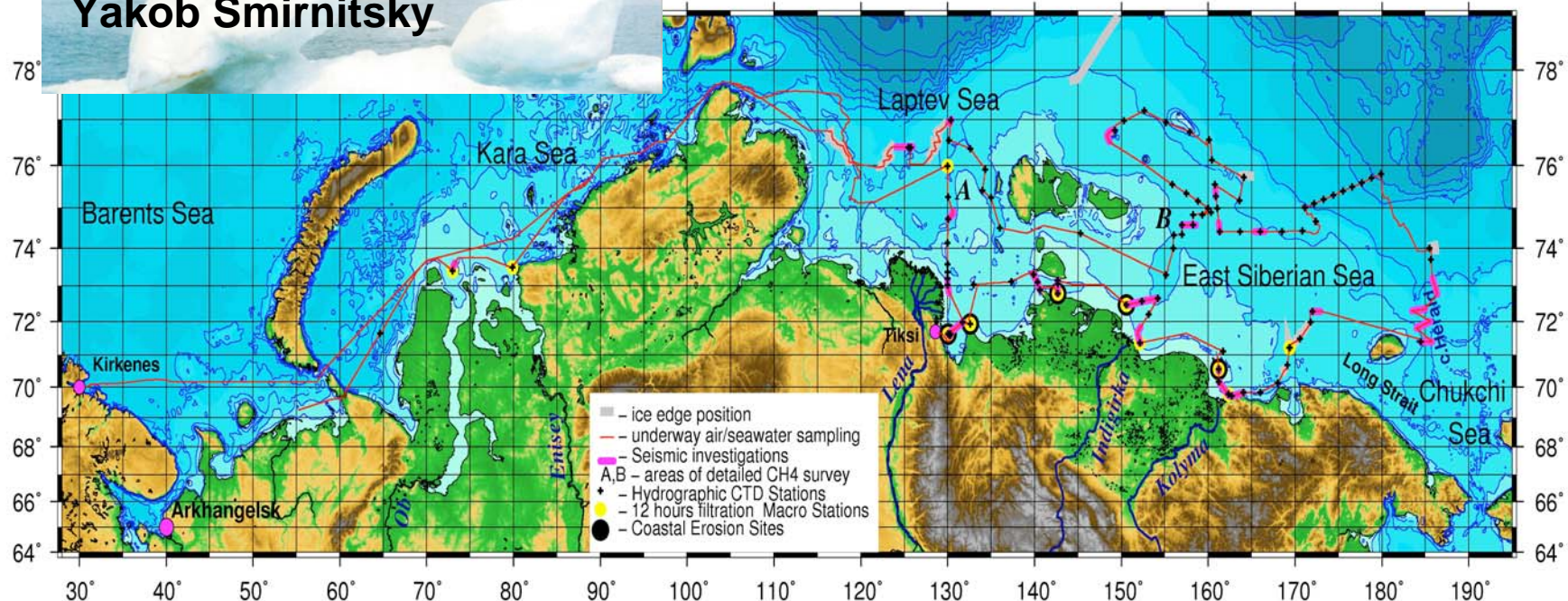


RECENT CRUISES



Yakob Smirnitsky

ISSS-2008

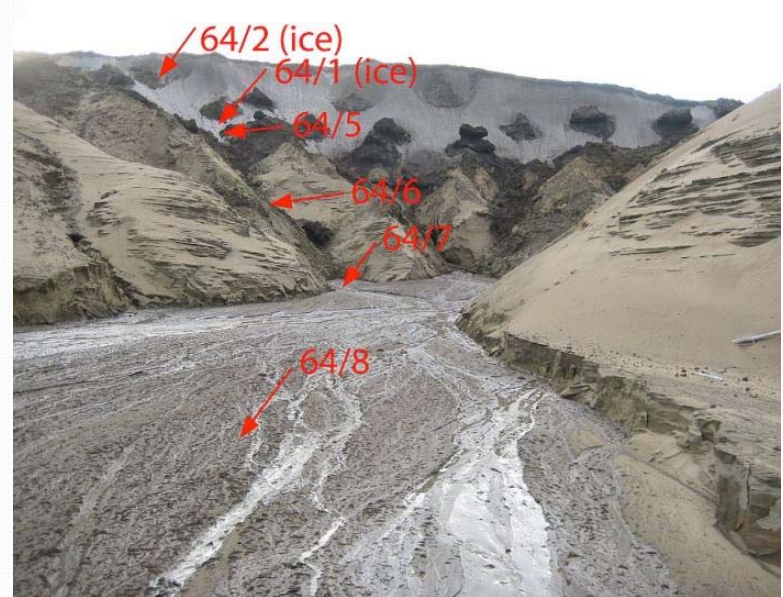
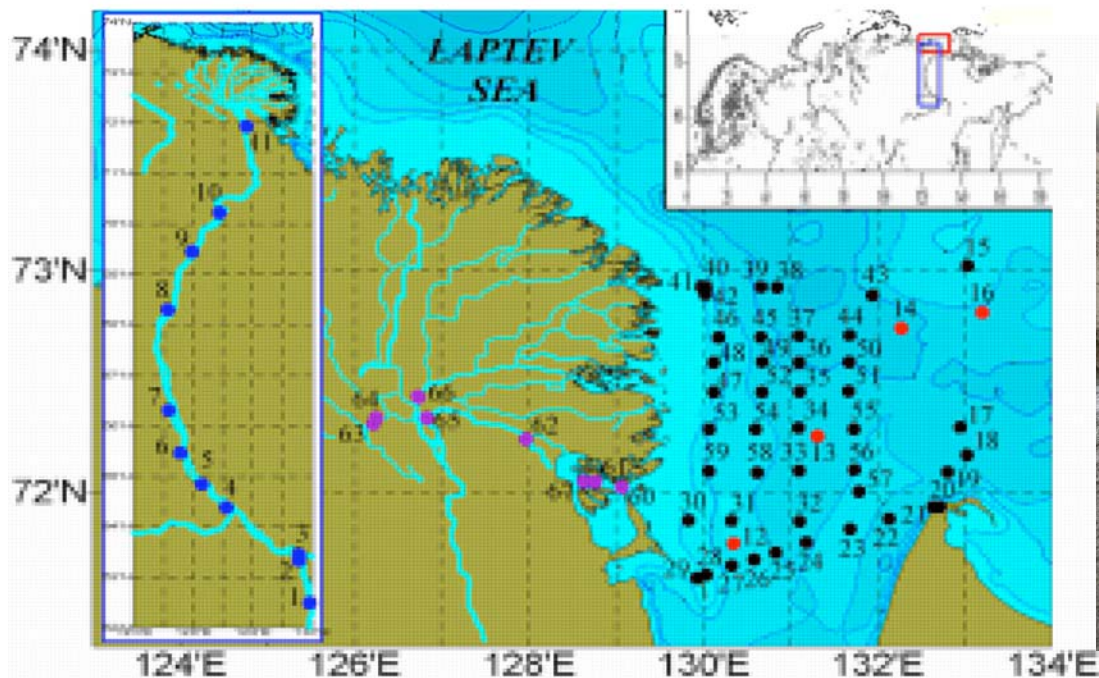


A complex program was accomplished during the 50-days ISSS-08 cruise August – September 2008 using three vessels by participants from 12 organizations in USA, Russia, Sweden, and UK.

The main vessel H/V *Yacob Smirnitskyi* traveled the entire length of the Siberian coast from Kirkenes, Norway to Herald Canyon, Chukchi Sea and back along the outer shelf.



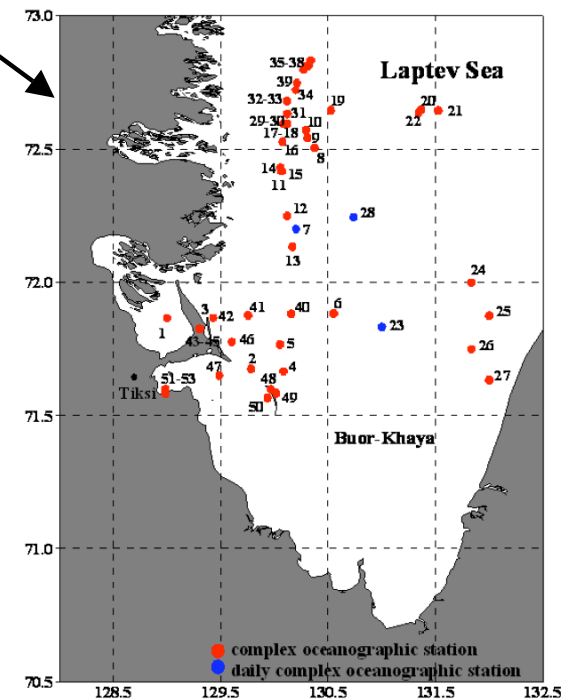
TB-0012



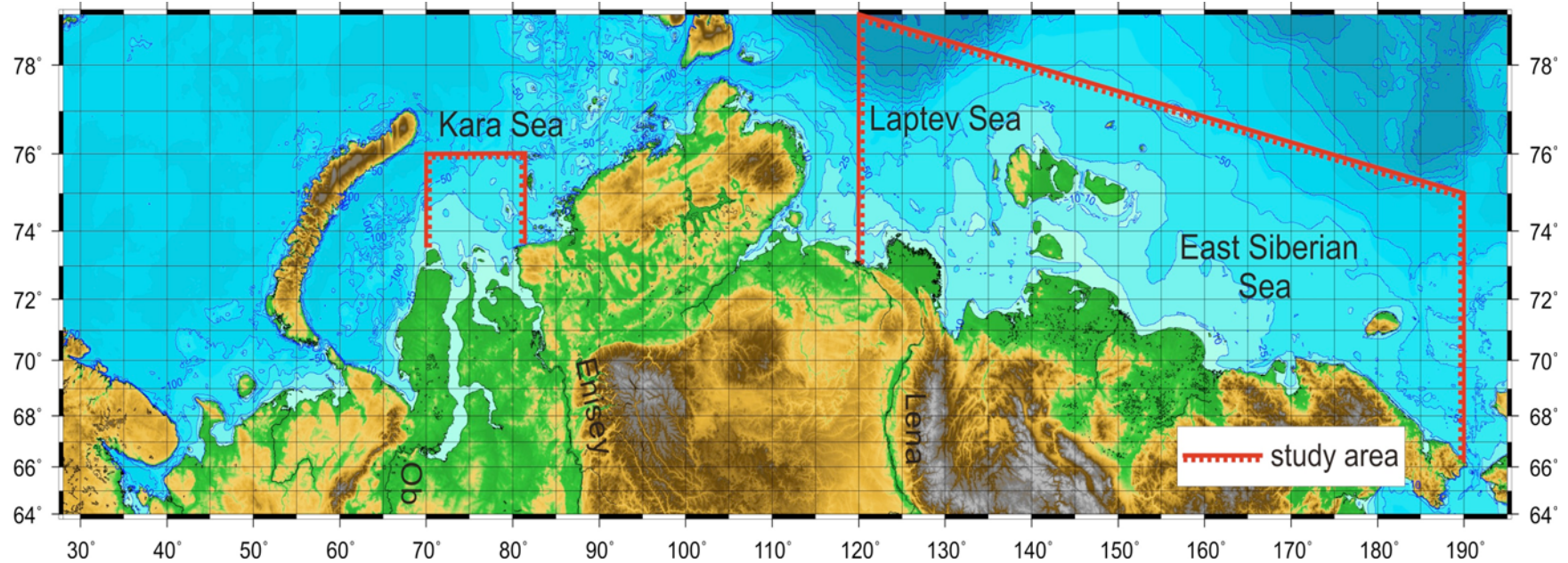
A second ship (*Neptun*) sampled the Lena River, and its delta channels and third (*TB-0012*)- the southeastern shallow Laptev Sea visiting eroded coastal ice-complexes

The study area (2003-2007)

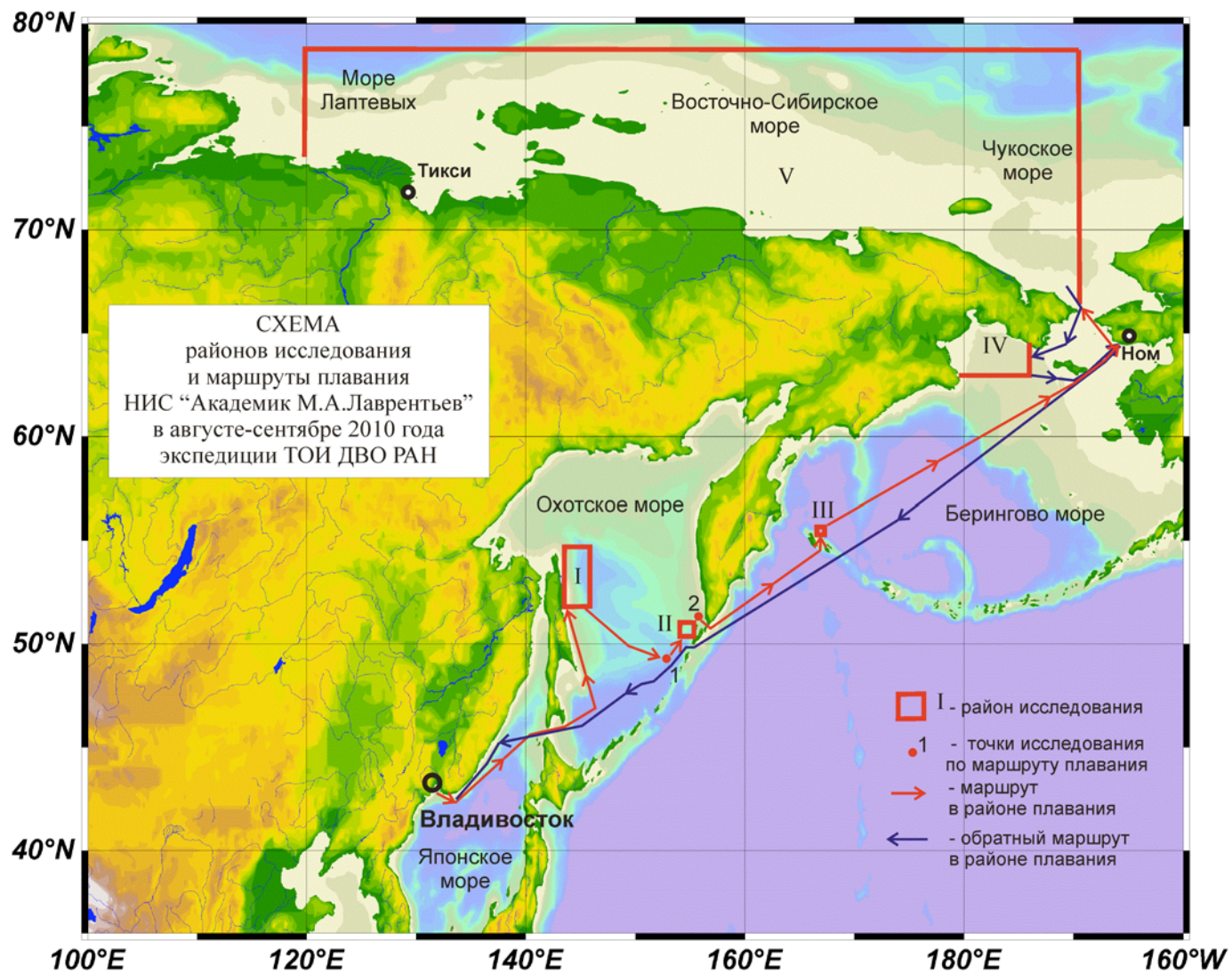
During the 2003-2008, **7 cruises** and **1 winter expeditions** on the sea ice were conducted , **>1000** oceanographic stations were performed, in situ measurements of CDOM and turbidity (validated vs concentrations of DOC and particulate material) were done.



Planning cruise 2010



Planning cruise-2011



Sampling opportunity of 2009 (August-September): Russian icebreaker *Kapitan Dranytsin* (NABOS)

